

# Feeding habits and position of great sculpin in the trophic system of Kamchatka waters



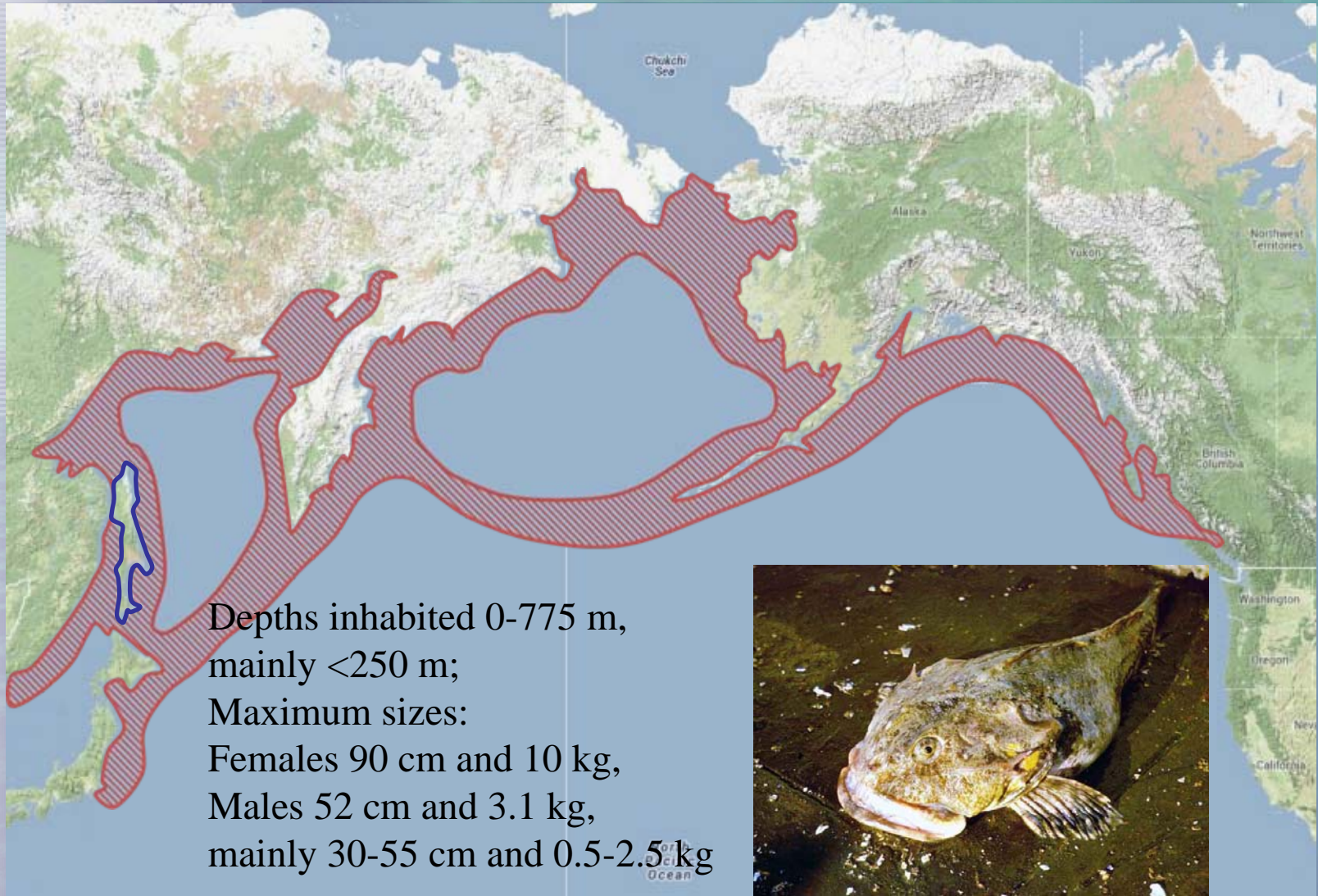
**Alexei M. Tokranov<sup>1</sup>**  
**and**  
**Alexei M. Orlov<sup>2</sup>**

*1 - Kamchatka Branch of Pacific Institute of Geography  
Far-Eastern Department Russian Academy of Sciences (KBPIG),  
Petropavlovsk-Kamchatsky, Russia. E-mail: tok\_50@mail.ru*

*2 - Russian Federal Research Institute of Fisheries  
and Oceanography (VNIRO), Moscow, Russia.  
E-mail: orlov@vniro.ru*



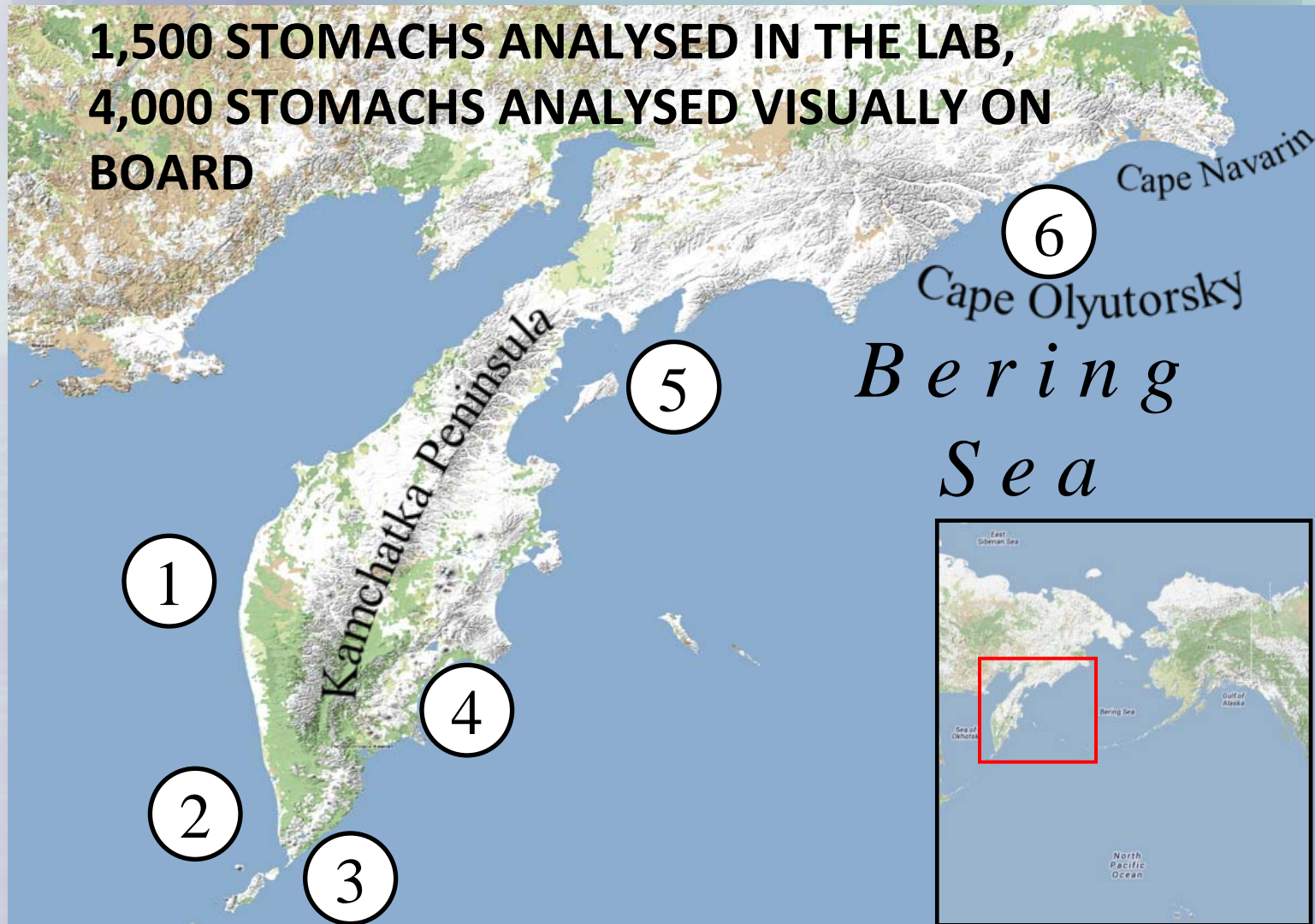
# RANGE OF GREAT SCULPIN *MYOXOCEPHALUS* *POLYACANTHOPCEPHALUS* IN THE NORTH PACIFIC OCEAN



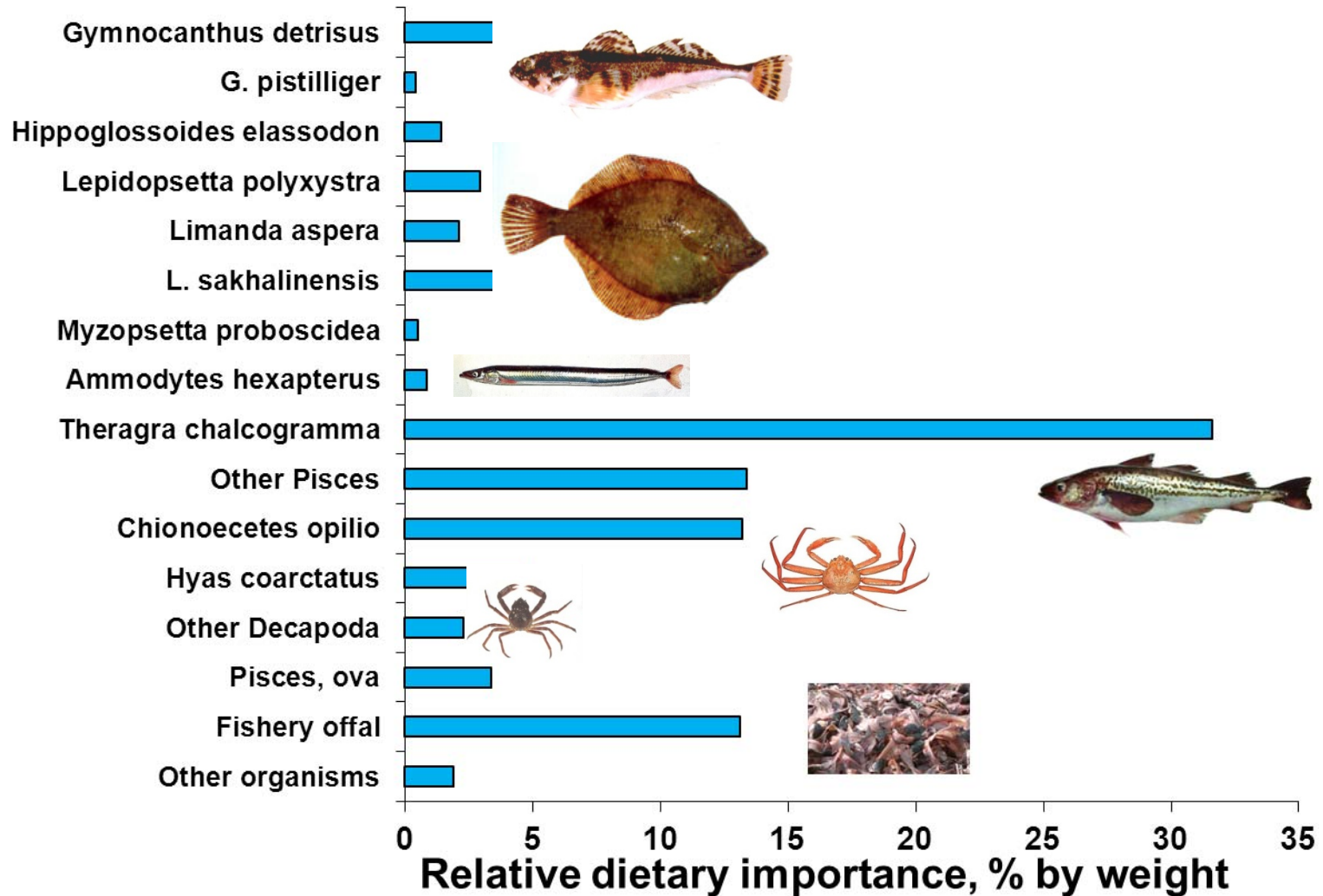


# SAMPLING LOCALITIES OF DATA ON GREAT SCULPIN FEEDING HABITS

**1,500 STOMACHS ANALYSED IN THE LAB,  
4,000 STOMACHS ANALYSED VISUALLY ON  
BOARD**

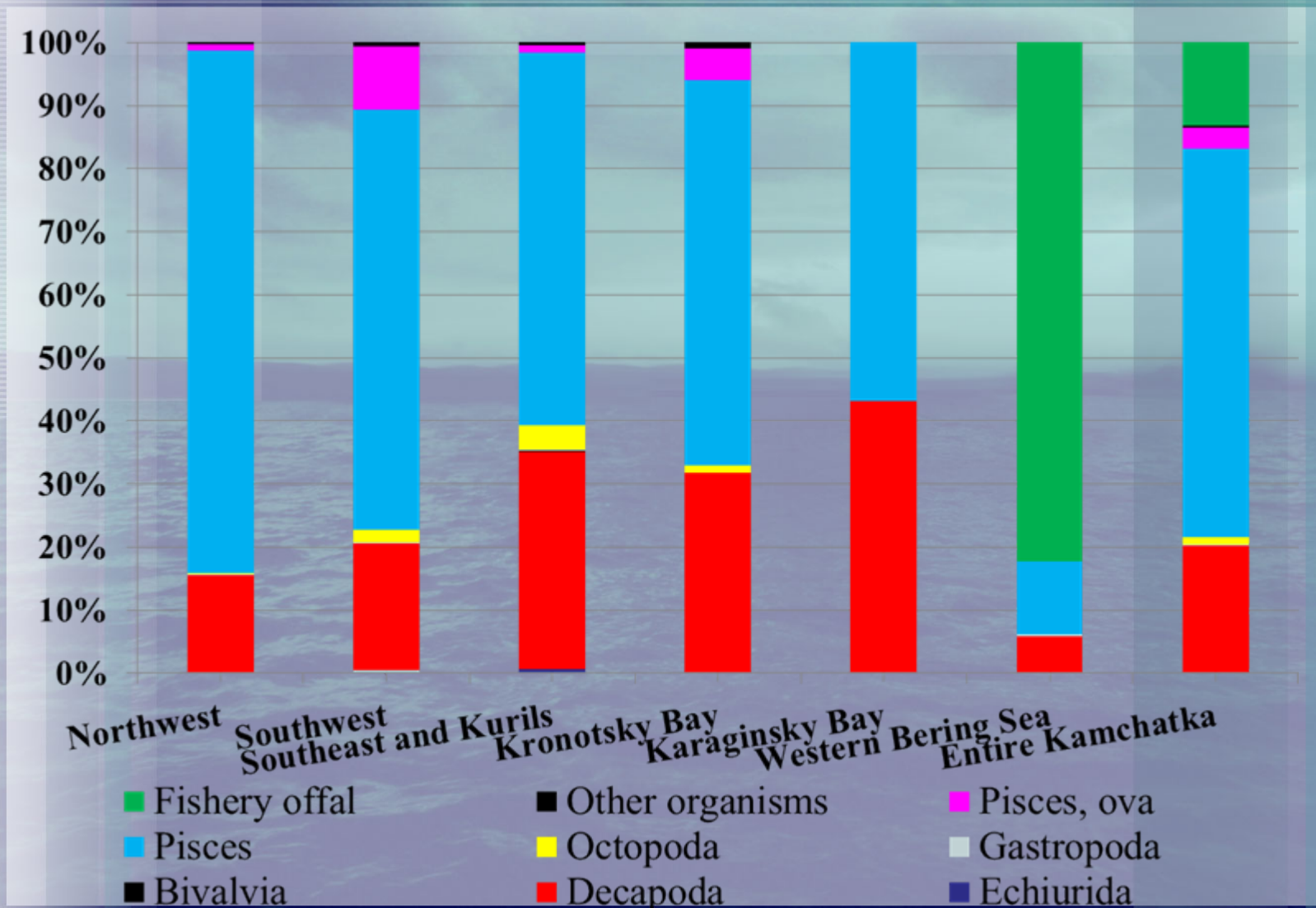


# IMPORTANCE OF MAIN DIETARY ITEMS OF GREAT SCULPIN (% BY WEIGHT) IN KAMCHATKA WATERS, 1978-2002

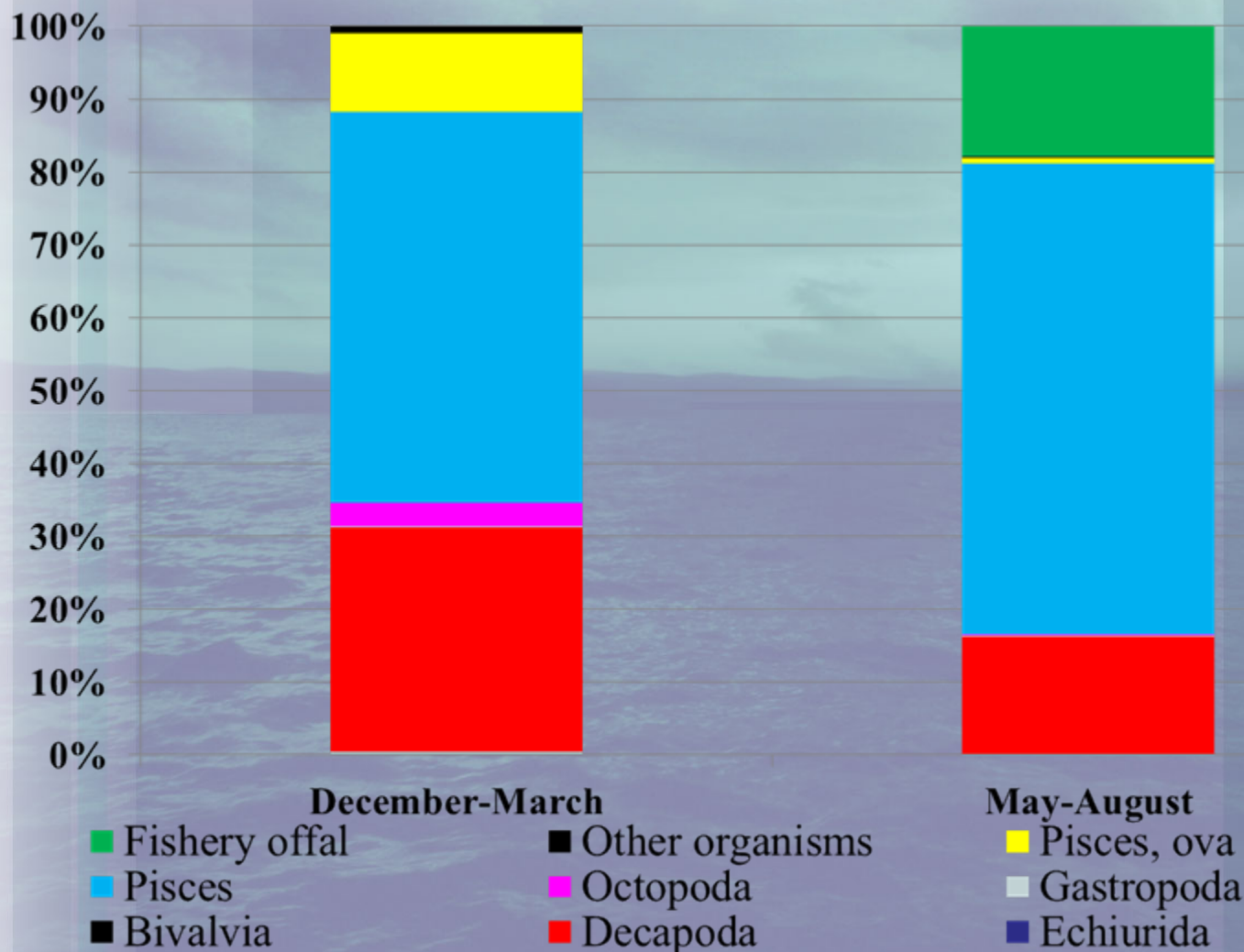




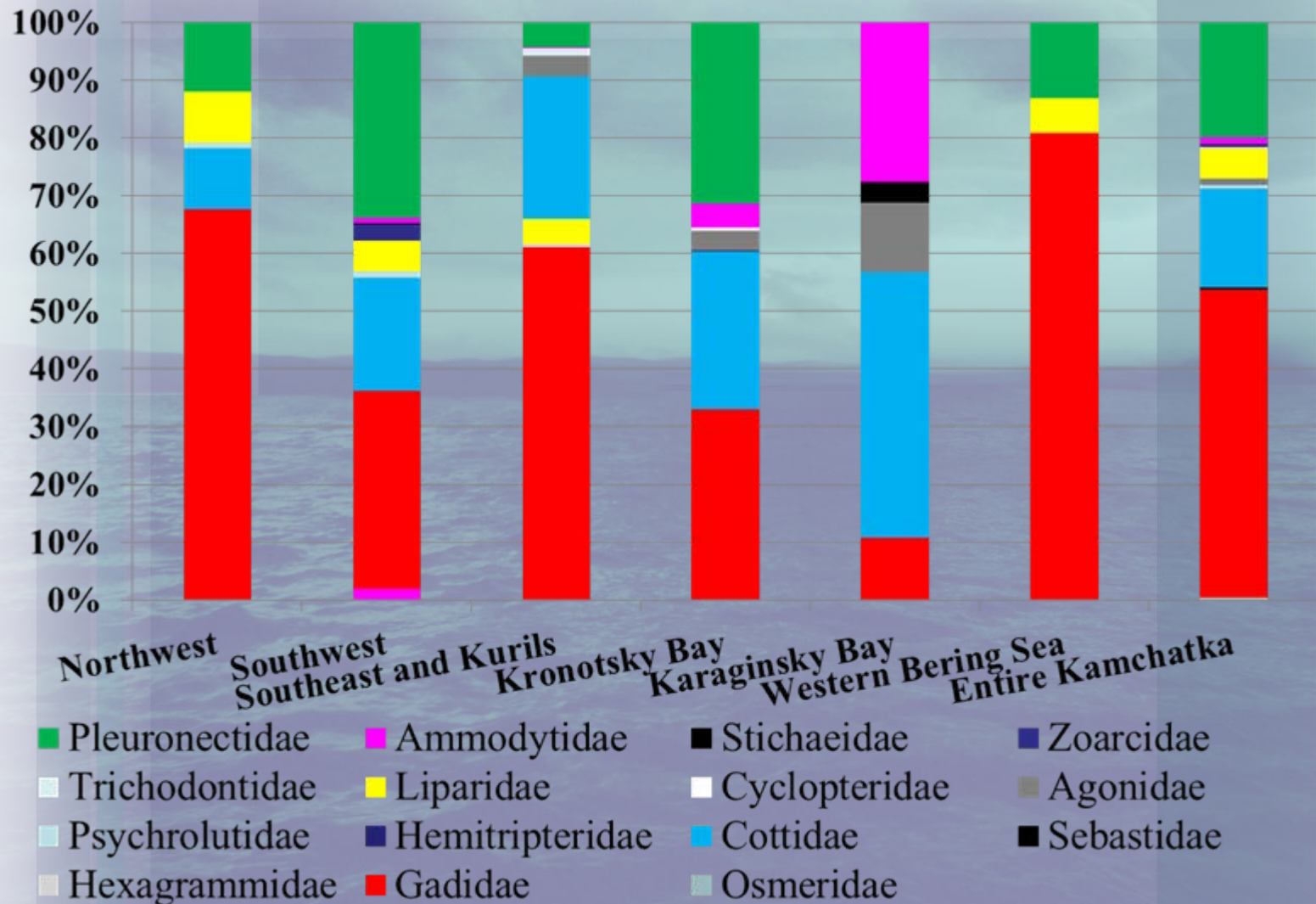
# DIET COMPOSITION OF GREAT SCULPIN IN VARIOUS AREAS OF KAMCHATKA WATERS, 1978-2002



# DIET COMPOSITION OF GREAT SCULPIN IN KAMCHATKA WATERS IN DIFFERENT SEASONS, 1978-2002

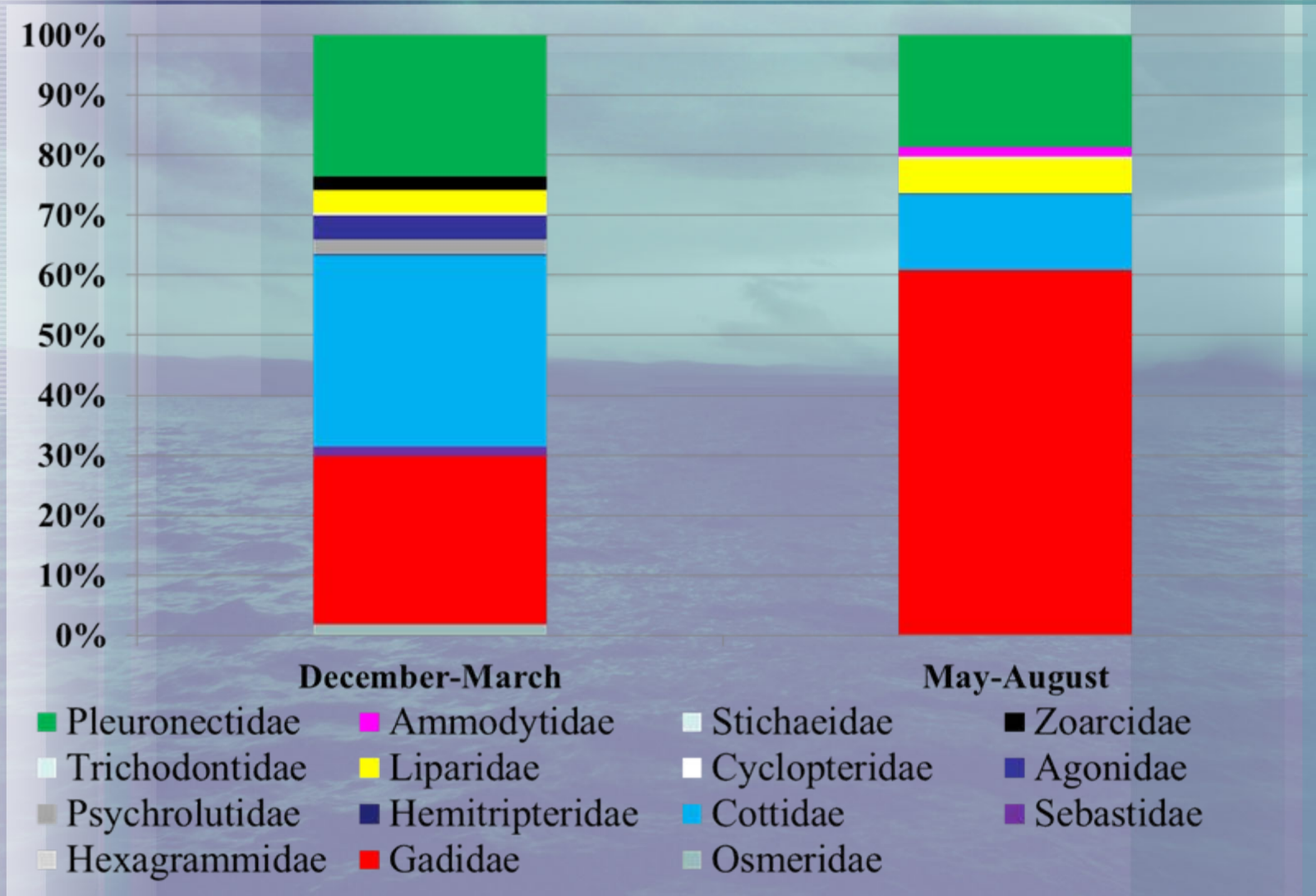


# KAMCHATKA WATERS, 1978-2002



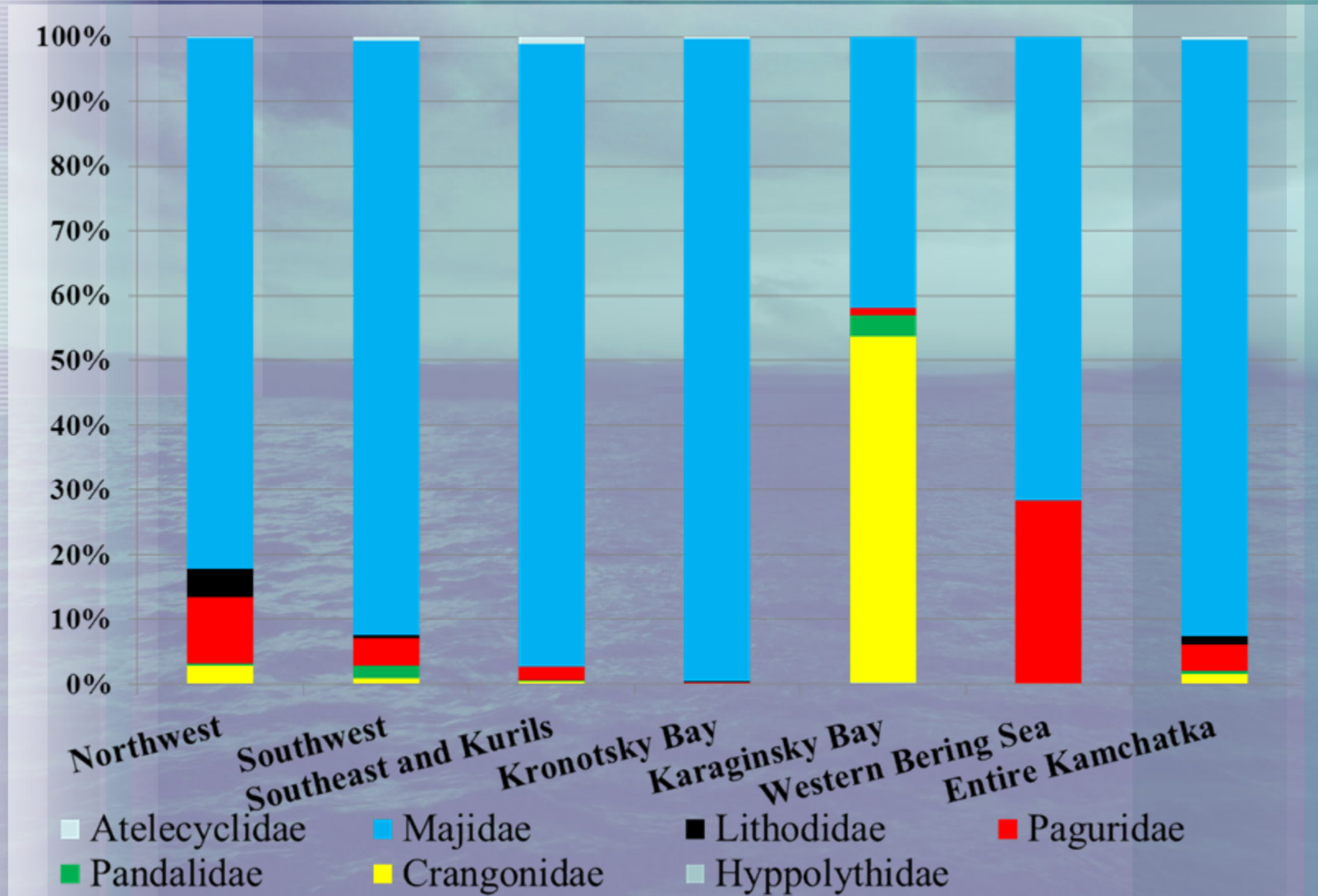


# IMPORTANCE OF VARIOUS FISH FAMILIES IN GREAT SCULPIN DIET IN KAMCHATKA WATERS IN DIFFERENT SEASONS, 1978-2002

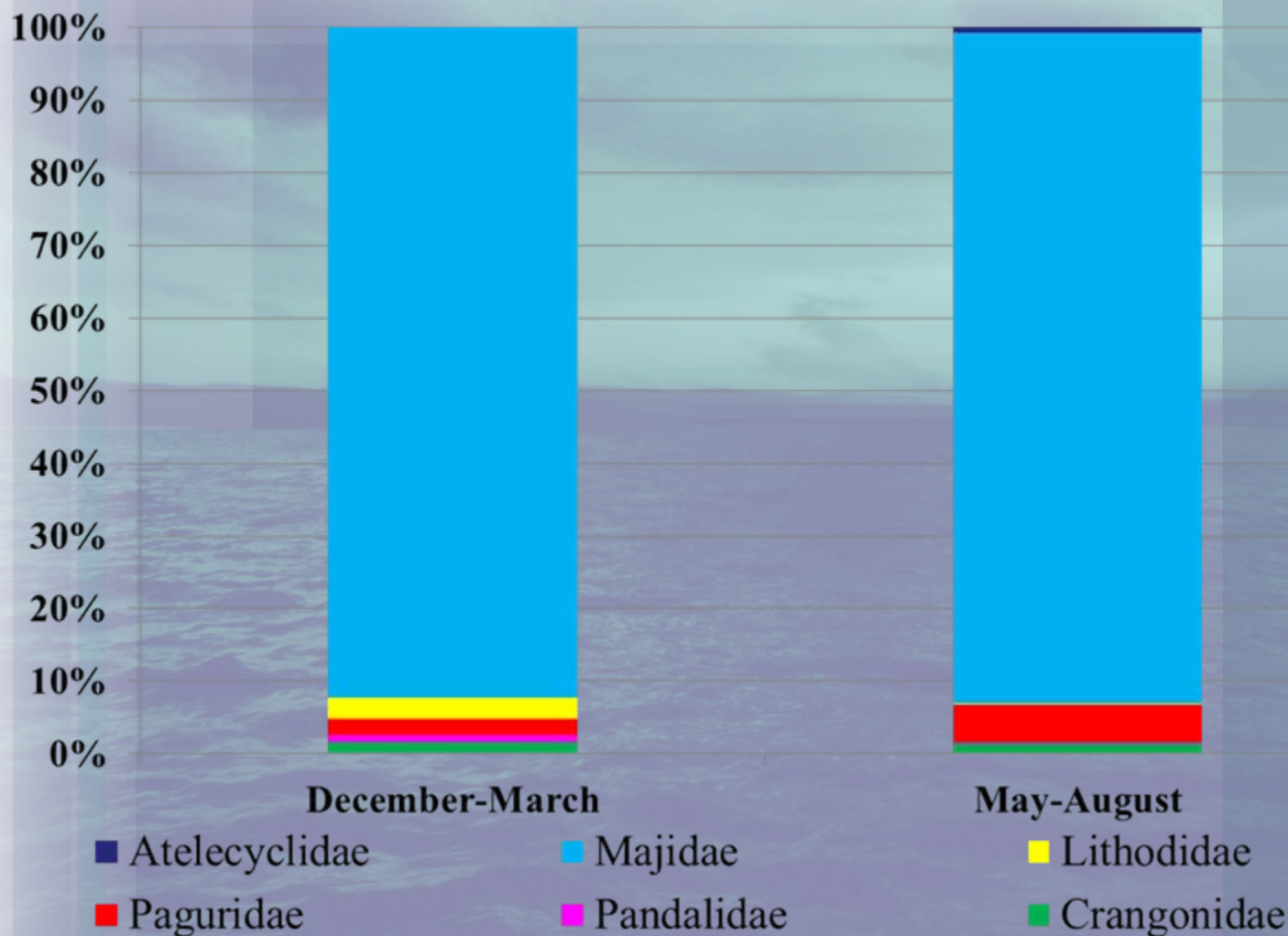




# IMPORTANCE OF VARIOUS DECAPOD FAMILIES IN GREAT SCULPIN DIET IN KAMCHATKA WATERS, 1978-2002

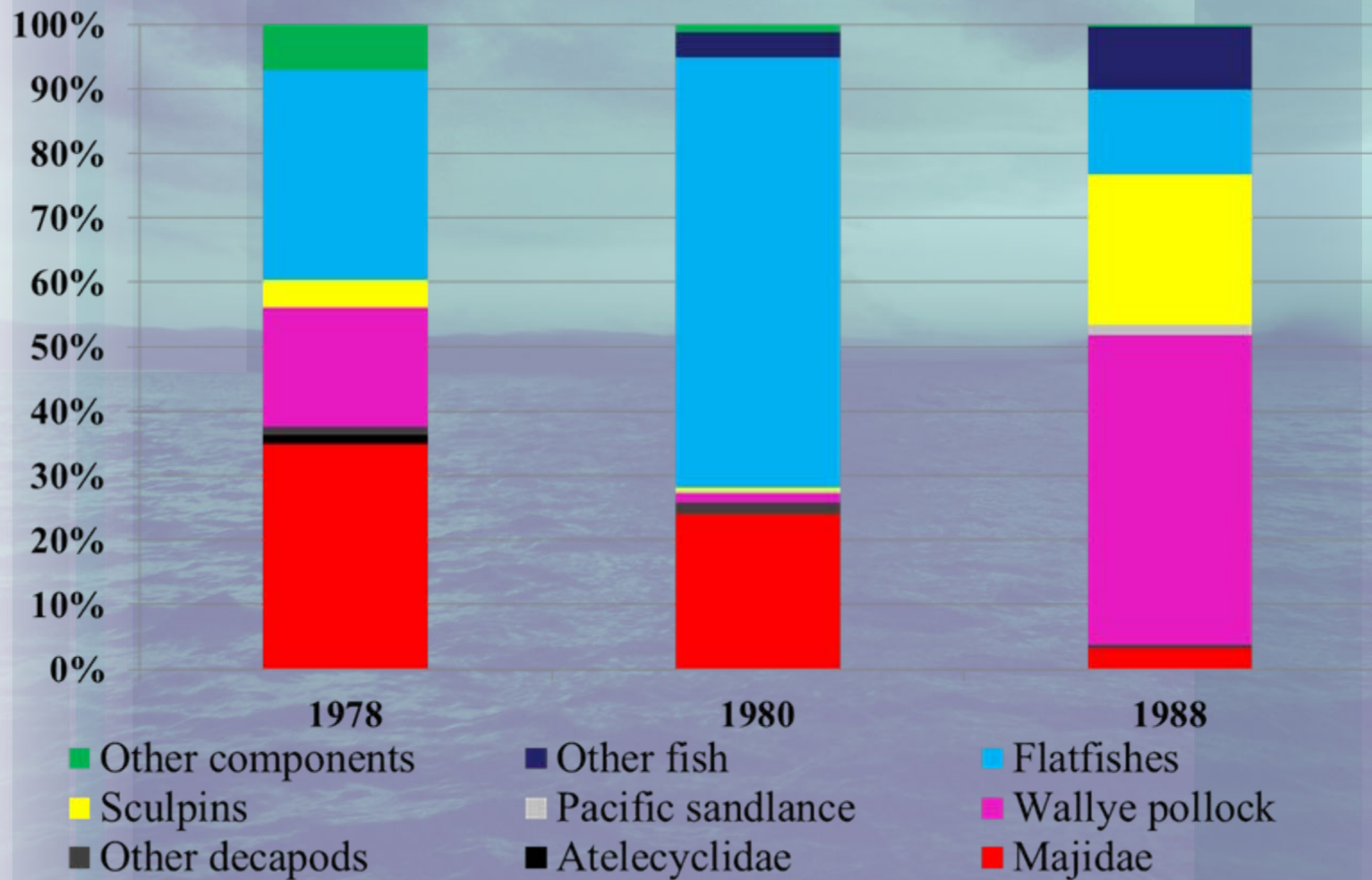


# IMPORTANCE OF VARIOUS DECAPOD FAMILIES IN GREAT SCULPIN DIET IN KAMCHATKA WATERS IN VARIOUS SEASONS, 1978-2002

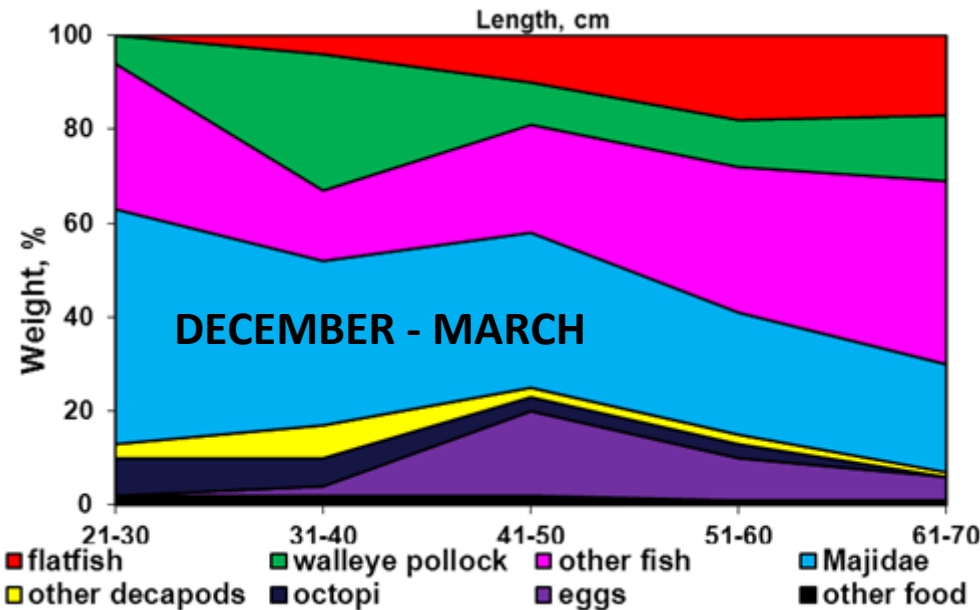
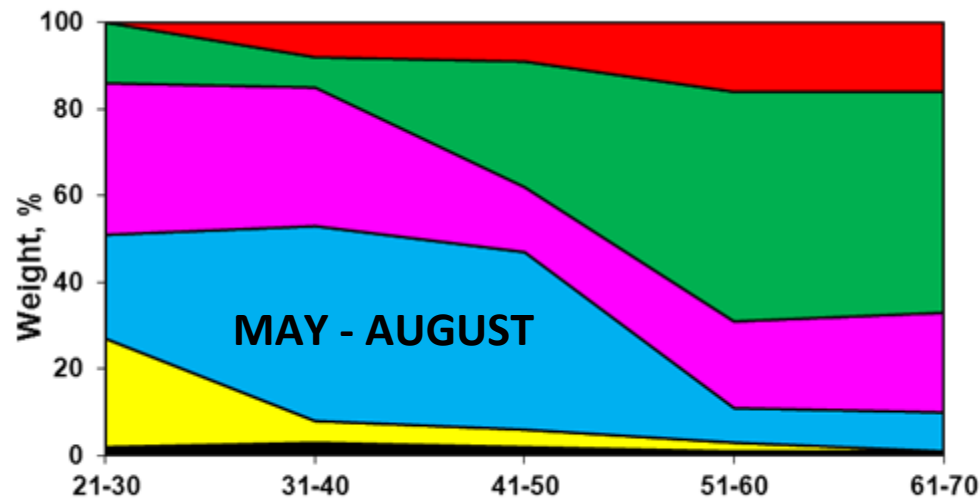




# DIET COMPOSITION OF GREAT SCULPIN OFF THE SOUTHWESTERN KAMCHATKA IN DIFFERENT YEARS, JUNE-JULY



# CHANGES OF GIANT SCULPIN DIET COMPOSITION WITH LENGTH INCREASING





# SCHEME OF GREAT SCULPIN TROPHIC RELATIONS IN KAMCHATKA WATERS

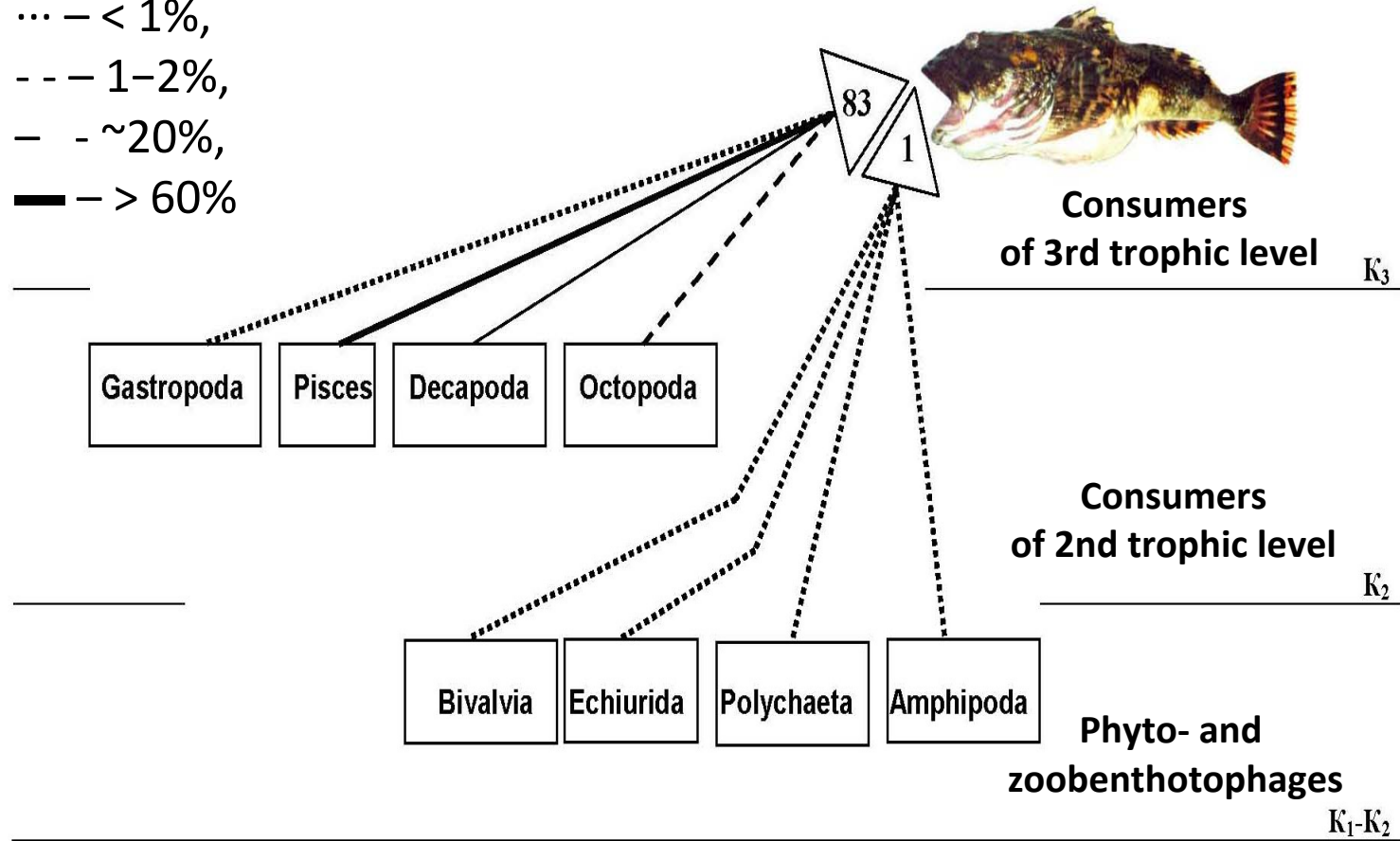
% by weight

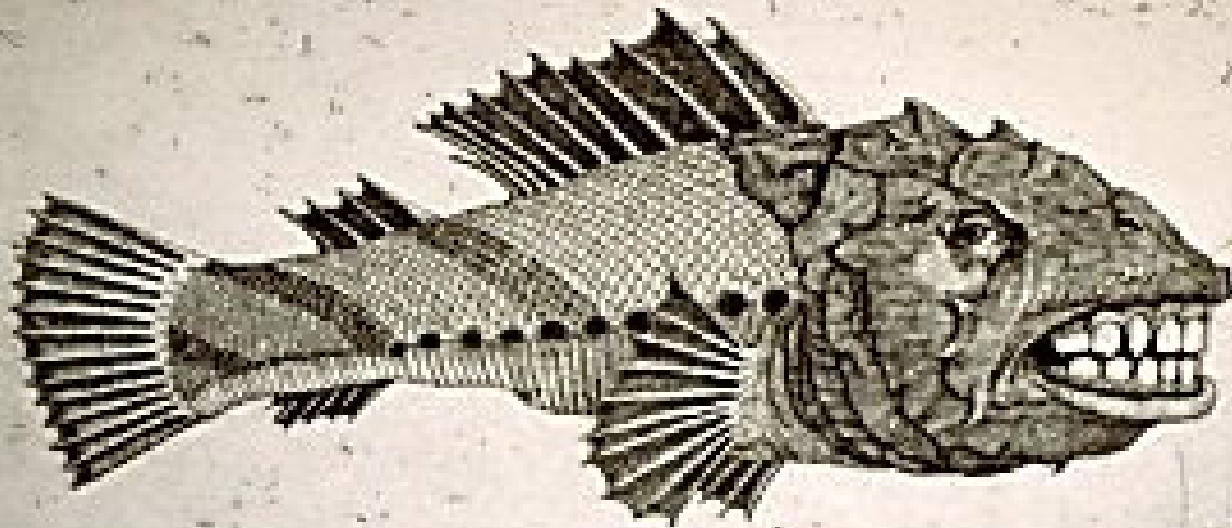
... — < 1%,

- - - 1–2%,

- - ~20%,

— > 60%





THANK YOU FOR YOUR ATTENTION