

USR 3278 CRIOBE – French Polynesia



CRIOBE: The 10th Indo-Pacific Fish Conference in 2017 in French Polynesia (Tahiti)

Prof. David LECCHINI

USR 3278 CRIOBE – French Polynesia



IPFC 10 in 2017:

CRIOBE

Centre de Recherches Insulaires et Observatoire de l'Environnement
based at Moorea, French Polynesia (<http://www.criobe.pf/>)

Chair of the IPFC:

Prof. David LECCHINI (CRIOBE)

Co-Chairs of the IPFC:

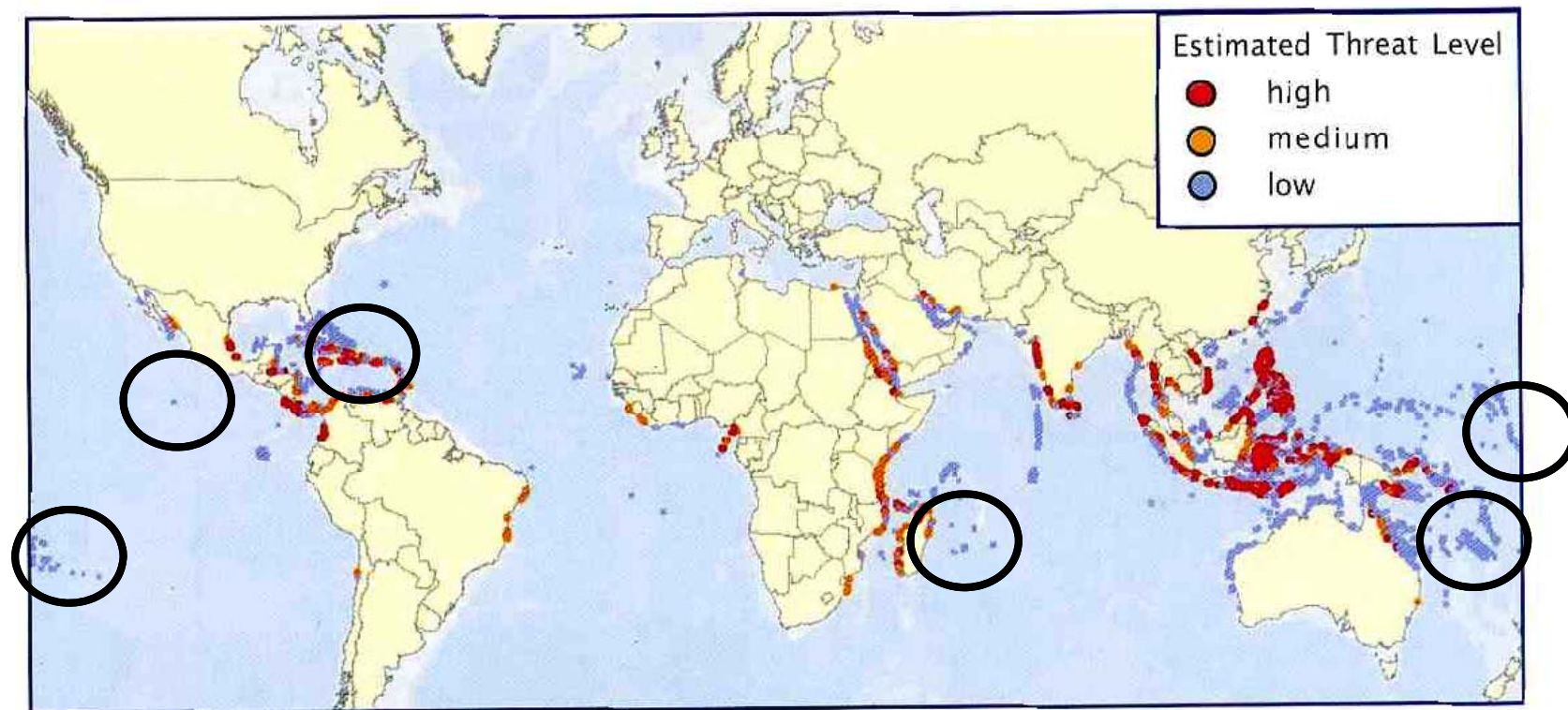
Prof. Serge PLANES (CRIOBE), Prof. René GALZIN (CRIOBE),
Dr. Glenn ALMANY (CRIOBE / James Cook University)

USR 3278 CRIOBE – French Polynesia



Why France?

State of coral reefs: 20% already destroyed, 50% threatened



France in the Indo-Pacific: Several overseas territories
French coral reefs are in “good” health

USR 3278 CRIOBE – French Polynesia



Why France in the Indo-Pacific?

French research in the Indo-Pacific:

Several research centers (CRIOBE, CNRS, EPHE, IRD, IFREMER, ...)

Three universities (UPF, UNC, UR)

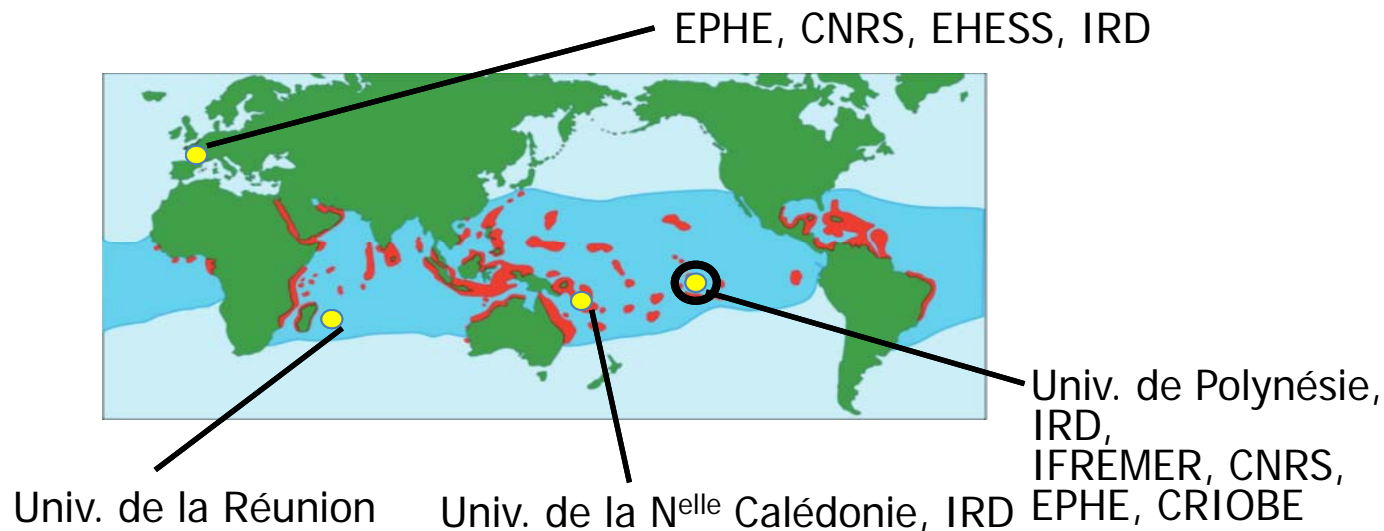


Laboratoire d'Excellence

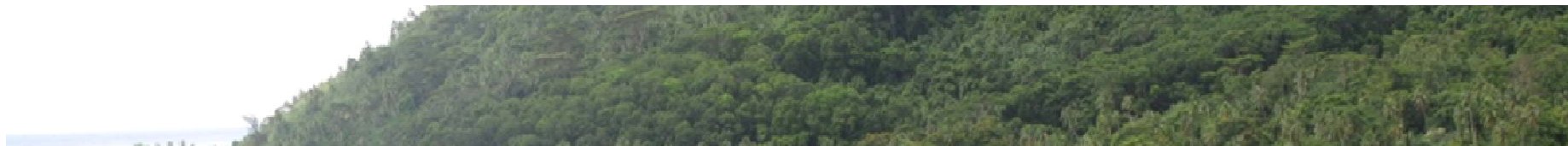
Coral Reefs facing global change

National research program for 10 years on “coral reefs facing global change”

=> Excellence program **Labex**; Leadership = CRIOBE



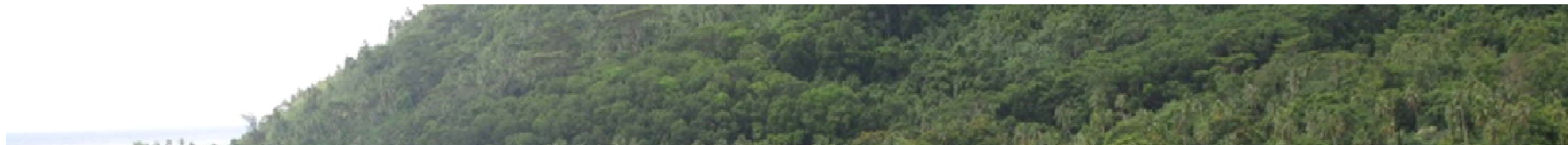
USR 3278 CRIOBE – French Polynesia



CRIOBE: Centre de Recherches Insulaires et OBservatoire de l'Environnement (EPHE – CNRS)
<http://www.criobe.pf/>



USR 3278 CRIOBE – French Polynesia



CRIOBE: Centre de Recherches Insulaires et OBservatoire de l'Environnement (EPHE – CNRS)
<http://www.criobe.pf/>

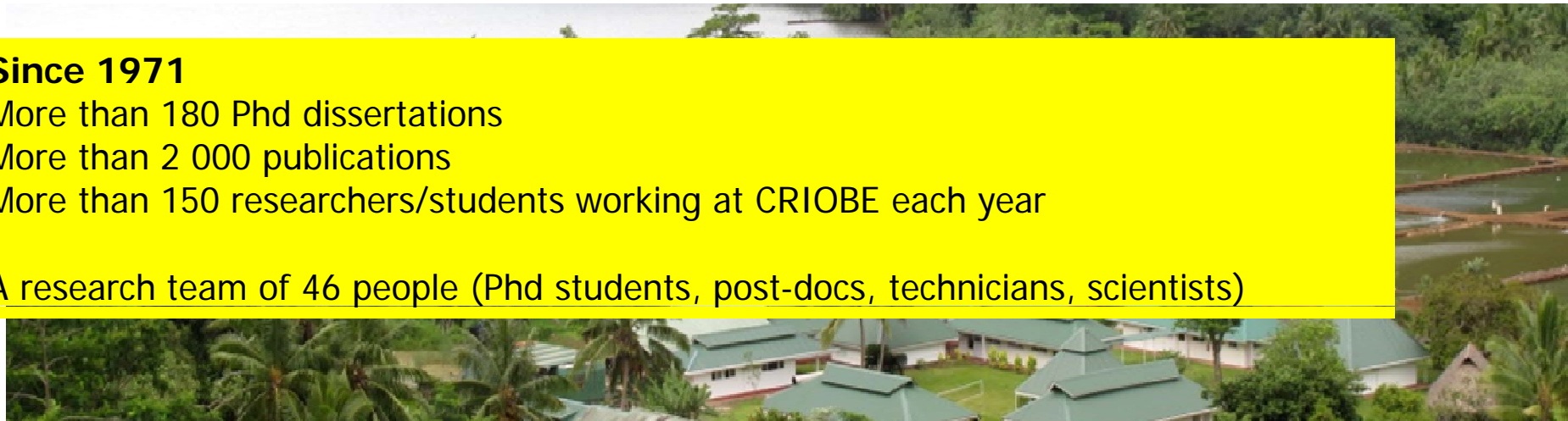
Since 1971

More than 180 Phd dissertations

More than 2 000 publications

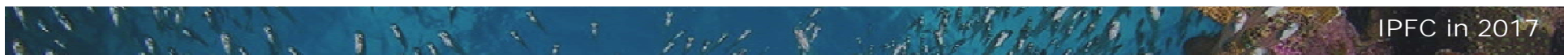
More than 150 researchers/students working at CRIOBE each year

A research team of 46 people (Phd students, post-docs, technicians, scientists)



LABEX « CORAIL »: Fundamental research

Institute for Pacific Coral Reefs (IPCR): Monitoring networks & workshops

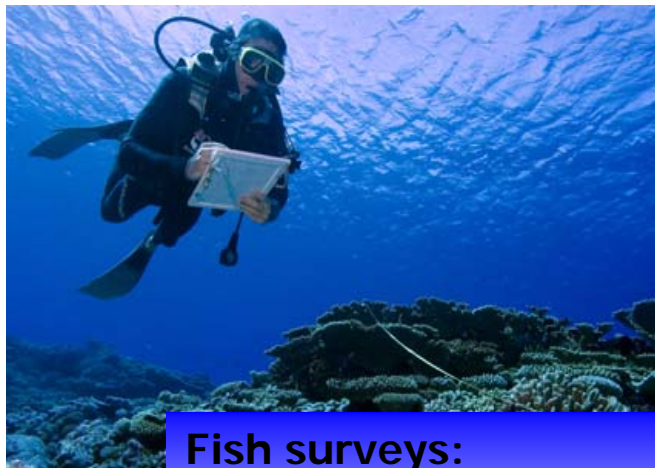


USR 3278 CRIOBE – French Polynesia



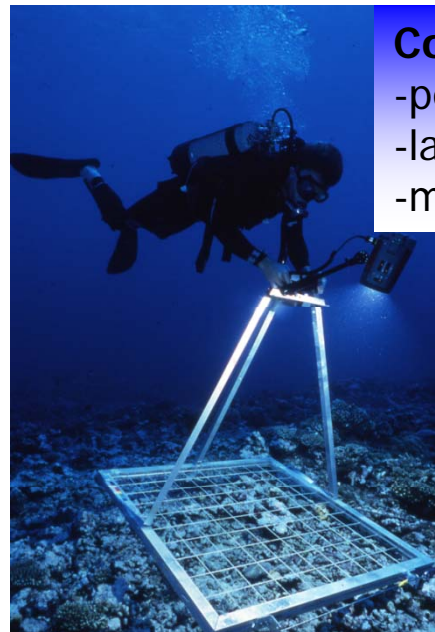
Polynesia Mana Network

Monitoring coral and fish communities in the central South Pacific



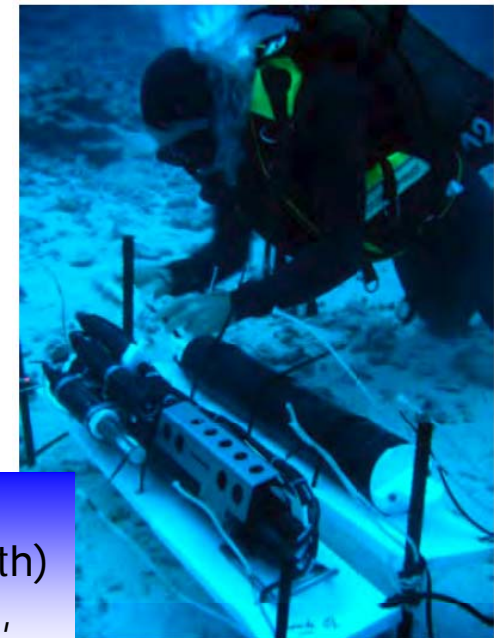
Fish surveys:

- 200 m² transects
- total fish fauna
- density
- size estimates



Coral surveys at different scales:

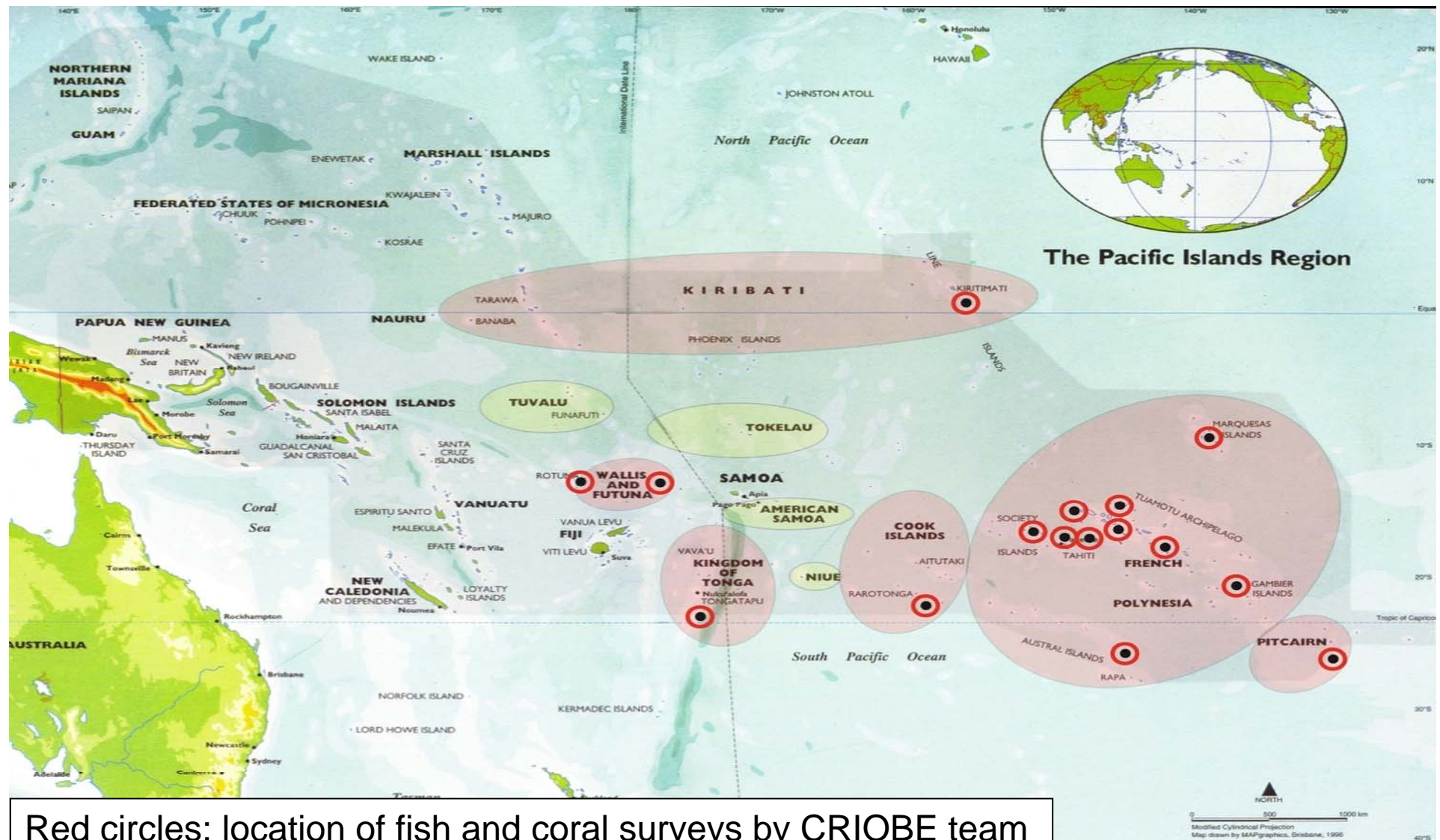
- permanent 1 m² quadrats
- landscape photography (> 10 m)
- manta tows (> 100 m)



Physical parameters:

- HOBO temperature loggers (10 m depth)
- Seabird data loggers (40 m depth): T°, swells, tides, pressure, O₂, salinity, pH

USR 3278 CRIOBE – French Polynesia





Organization of IPFC in 2017 at Tahiti

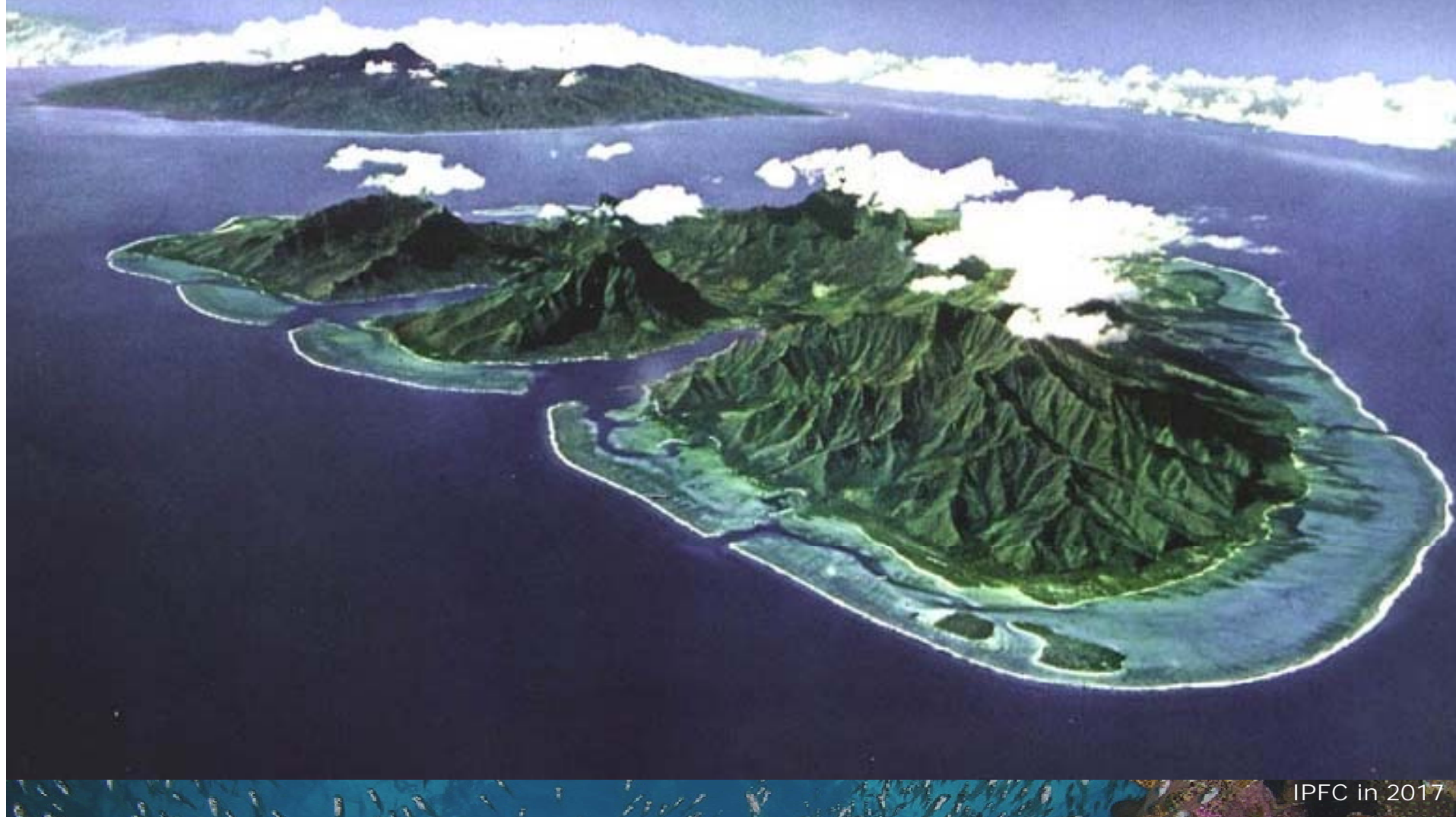
As in the previous IPFCs, the **main themes** of the next IPFC in 2017 could include:

- Systematics
- Evolution
- Zoogeography and Phylogeography
- Biodiversity
- Ecology
- Behavior
- Conservation

USR 3278 CRIOBE – French Polynesia



Organization of IPFC in 2017 at Tahiti



IPFC in 2017

USR 3278 CRIOBE – French Polynesia



Organization of IPFC in 2017 at Tahiti

Information about the city hosting the IPFC:

Papeete - Tahiti, French Polynesia

- * Tahiti is the largest island in French Polynesia. Papeete, the capital, is the economic, cultural and political centre, and its population is approximately 145,000.
- * Tahiti is located 4,400 km south of Hawaii, 7,900 km from Chile and 5,700 km from Australia. Faa'a International Airport is located 5 km from the capital, Papeete.
- * International flights to Papeete originate in Auckland, Honolulu, Los Angeles, Paris, Santiago de Chile, Sydney and Tokyo. Major airline carriers include Air France, Air New Zealand, Air Tahiti Nui, Hawaiian Airlines and LAN Airlines.

Proposed venue within host city:

- * The IPFC could be held at the *Radisson Plaza Resort Tahiti* set in a prime location in Papeete. However, several other hotels (for a total capacity of more than 2,000 rooms) are present in Papeete and could held the IPFC: InterContinental Resort Tahiti, Le Meridien Tahiti, Sofitel Tahiti Maeva Beach Resort, Hotel Tahiti Nui, Tahiti Airport Motel, etc

Proposed date: June, 2017



See you in Tahiti in 2017